



JAYPEE GREENS

# GOLF PLOT (AREA)

NEXT SLIDE

89 8889 8889



JAYPEE GREENS



Jaypee Greens Golf Plots (Area) is a premium plotted development located in Sector 128, Noida, along the Noida–Greater Noida Expressway. Part of the integrated Jaypee Greens Wish Town township, these plots offer an opportunity to build custom luxury residences within a well-planned, golf-centric environment.

89 8889 8889



# GOLF PLOT (AREA) HIGHLIGHTS

---

- Premium residential plots located within a golf-centric, low-density township environment.
- Situated in Sector 128, Wish Town, Noida, along the Noida–Greater Noida Expressway with excellent connectivity.
- Equipped with lifestyle amenities like clubhouse, swimming pool, landscaped gardens, play areas, and sports facilities.
- Part of the fully integrated Jaypee Greens Wish Town township with access to schools, hospitals, retail, and social infrastructure.
- Ready-to-possession plots with many already developed into premium villas and residences.
- Equipped with 24×7 CCTV surveillance, gated access, and security arrangements for residents.



JAYPEE GREENS

# GOLF PLOT (AREA) GALLERY

---





JAYPEE GREENS



# GOLF PLOT (AREA) AMENITIES

Experience a thoughtfully planned lifestyle at Jaypee Greens Golf Plot with a wide range of recreational, wellness, and everyday comfort amenities. The project highlights landscaped green spaces, sports and leisure facilities, children's play areas, and community-focused features designed for modern living within Wish Town, Noida.



CHILDREN'S PLAY  
AREA



PARKING



SWIMMING POOL



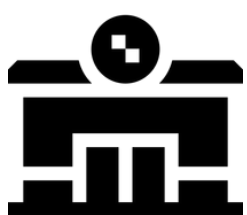
BASKETBALL



GOLF CART SHUTTLES



OUTSIDE SHOWER



CLUBHOUSE



TENNIS COURT

89 8889 8889

# GOLF PLOT (AREA)

239 SQ.YARD

358 SQ.YARD

418 SQ.YARD

538 SQ.YARD



89 8889 8889



JAYPEE GREENS

## **GOLF PLOT (AREA) FEATURES**

### **GOLF-COURSE VIEWS**

APARTMENTS ARE SET WITHIN THE JAYPEE GREENS WISH TOWN TOWNSHIP AND THE OFFICIAL BROCHURE HIGHLIGHTS A CHIP & PUTT GOLF COURSE WITH LARGE GREEN LANDSCAPED AREAS AROUND THE PROJECT.

### **CLUB & RECREATION ACCESS**

THE PROJECT BROCHURE LISTS MULTIPLE RECREATIONAL AMENITIES INCLUDING SOCIAL CLUBS, SWIMMING POOL, CHILDREN'S PLAY AREAS, TENNIS AND BASKETBALL FACILITIES FOR RESIDENTS.

### **GREEN TOWNSHIP LIVING**

GARDEN ISLES IS PART OF JAYPEE GREENS WISH TOWN, SECTOR 128, NOIDA, ALONG THE NOIDA-GREATER NOIDA EXPRESSWAY, OFFERING AN INTEGRATED TOWNSHIP LIFESTYLE.

89 8889 8889



JAYPEE GREENS

# **GOLF PLOT (AREA) FEATURES**

## **SPACIOUS 2, 3 & 4 BHK HOMES**

THE OFFICIAL PROJECT PAGE PRESENTS GARDEN ISLES WITH 2, 3 AND 4 BHK APARTMENTS DESIGNED FOR MODERN RESIDENTIAL LIVING.

## **SCROLL FEATURES LANDSCAPED OPEN ENVIRONMENT TITLE**

THE OFFICIAL BROCHURE STATES THAT A LARGE PART OF THE DEVELOPMENT IS DEDICATED TO GREEN AREA AND BEAUTIFULLY DESIGNED LANDSCAPES, SUPPORTING AN OPEN AND PREMIUM RESIDENTIAL SETTING.

89 8889 8889

# CONTACT US

89 8889 8889



<https://www.youtube.com/@discoveryproperty>



[https://www.instagram.com/discoveryproperty?  
utm\\_source=ig\\_web\\_button\\_share\\_sheet&igs  
h=ZDNIZDc0MzIxNw==](https://www.instagram.com/discoveryproperty?utm_source=ig_web_button_share_sheet&igsh=ZDNIZDc0MzIxNw==)



<https://www.jaypeegreens.in>

<https://www.discoveryproperty.com>

89 8889 8889